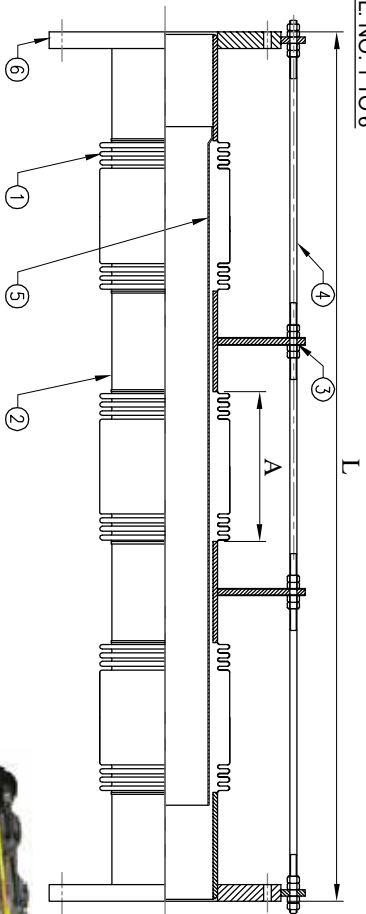
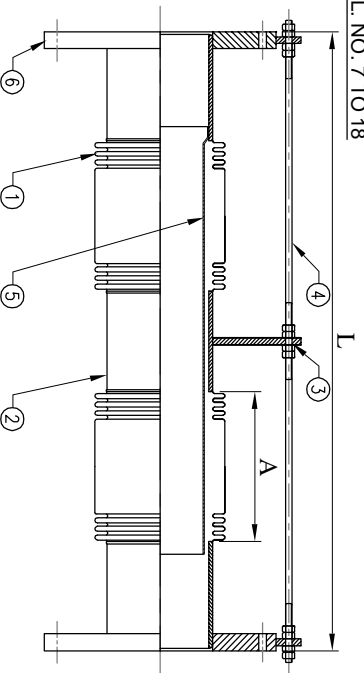


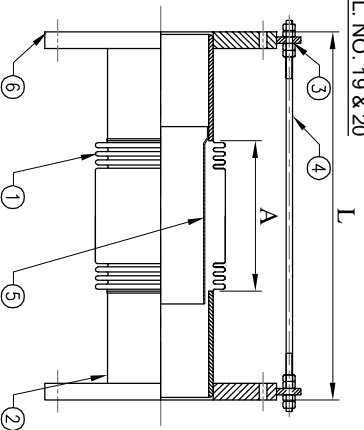
SL. NO. 1 TO 6



SL. NO. 7 TO 18



SL. NO. 19 & 20



MODEL - SSEJ-150F-SG
[THREE BELLOW TYPE]



MODEL - SSEJ-150F-SG
[TWO BELLOW TYPE]



MODEL - SSEJ-150F-SG
[SINGLE BELLOW TYPE]

ABOVE PICTURES ARE FOR ILLUSTRATION PURPOSE ONLY

MODEL - SSEJ-150F-SG
FLANGED ENDS - ANSI ASA 150 OR BS4504 PN 16

WORKING PRESSURE : 16 bar

WORKING TEMPERATURE : -50°C to +450°C

AXIAL MOVEMENT : + / -50mm

WARNING : - Control units must be used to protect this part from excessive movement if piping is not properly anchored.

STANDARD FINISH

FLANGES / GUSSETS : GALVO PAINT
CONTROL ROD : ZINC PLATED
& HARDWARE

SL. NO.	NOMINAL BORE	TOTAL LENGTH (L)	BELLOWS	
	mm	(+/-5mm)	CORRS	A
1	15	610	20+20+20	104
2	20	610	20+20+20	104
3	25	610	20+20+20	104
4	32	700	20+20+20	138
5	40	700	18+18+18	135
6	50	650	24+24	135
7	65	480	12+12	120
8	80	480	12+12	120
9	100	530	12+12	144
10	125	530	12+12	144
11	150	530	12+12	144
12	200	650	10+10	140
13	250	650	10+10	140
14	300	650	10+10	140
15	350	660	6+6	140
16	400	660	6+6	140
17	450	660	6+6	140
18	500	660	6+6	140
19	550	680	8	280
20	600	680	8	280

■ CONSTRUCTION

ITEM	PARTS	MATERIAL
1	BELLOWS	SST304 (2 PLY)
2	TUBE	CARBON STEEL
3	GUSSET	CARBON STEEL
4	TIE RODS	CARBON STEEL
5	INNER SLEEVE	SST304
6	FLANGE	CARBON STEEL

OTHER MATERIALS/FINISH AVAILABLE ON REQUEST